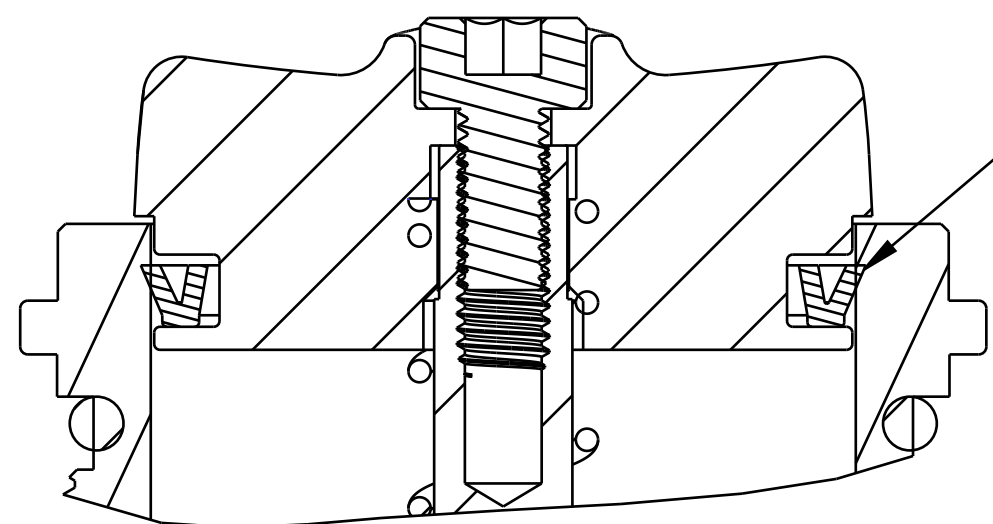


4

3

2

1



NOTE U-CUP SEAL ORIENTATION.

SECTION A-A
SCALE 4:1

210-22-523
 KNOB: Rebound Adjust, Extruded, Red
 REFERENCE ONLY
 (FOR INSTALLATION
 INTO FORK)
 TORQUE:
 50±5 IN.LB.

TORQUE:
 5.0±0.5 IN.LB.

210-22-751
 Lever, Compression Selector, 2014 32mm CTD

010-01-012
 Ball [Ø.1094]

REFERENCE ONLY
 (FOR INSTALLATION
 INTO FORK)

TORQUE:
 220±5 IN.LB.

241-01-002
 Fastener, Custom: Crush Washer, Plastic, R-RL-RLC

241-00-005
 Fastener, Custom: Nut, Bottom, R-RL-RLC

018-01-007
 Socket Set Half Dog Point Screw [#8-32 X 0.250 TLG]

Cartridge Assy, 2014 32 O/C

GREASE:
 THIN LAYER
 SLICK HONEY

GREASE:
 THIN LAYER
 BLUE MARINE

039-00-227
 Spring: Detent [.24 TLG X .102 OD X 90 lb/in] Stainless Steel

234-04-368
 Plate, Detent Spring Retainer, 2013 CTD Performance

039-00-302
 Tolerance Spring, 2014 CTD F/P

036-01-043
 Seals: U-Cup, Shore 70A, 2013 Fit-CTD and CTD-ADJ

019-01-095
 Fastener, Standard (Metric): Screw [M3 X 6mm] SHCS, Patchlock

TORQUE:
 11±3 IN-LB

FOX FOX Factory, Inc. Ph 831-768-1100
 130 Hangar Way, Watsonville, CA 95076 USA Fax 831-768-9312

TITLE
**2014 32 O/C-CTD
 CARTRIDGE ASSEMBLY COMPLETE**

SIZE DWG. NO.
C
 PLOT SCALE 0.80:1 SHEET 1 OF 1

PROPRIETARY
 THIS DOCUMENT CONTAINS CONFIDENTIAL, PROPRIETARY INFORMATION
 THAT IS FOX PROPERTY. DO NOT DISCLOSE TO OR DUPLICATE
 FOR OTHERS EXCEPT AS AUTHORIZED BY FOX.

4

3

2

ProE ASSEM